

## MEDIUM PRESSURE

### 3-Stage Compressors

› **Pressure**

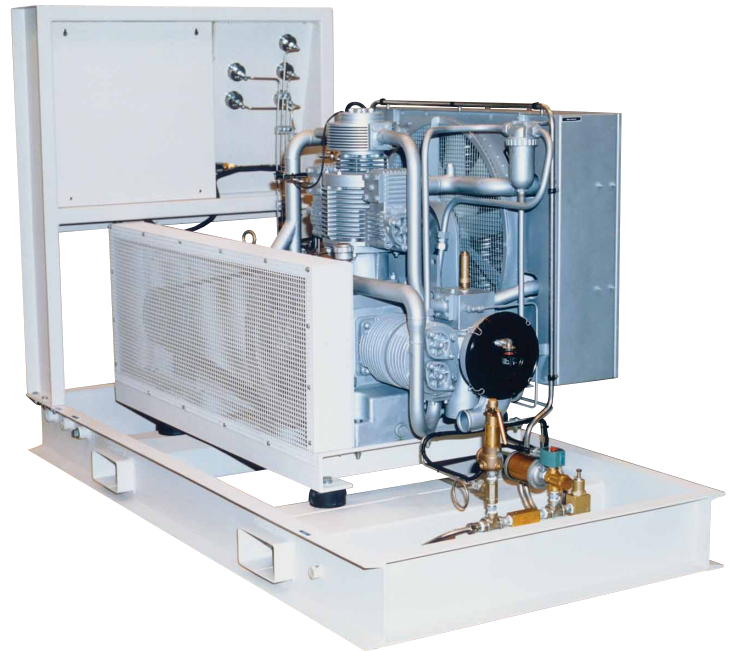
350 to 1000 psig  
24 to 69 bar

› **Capacity**

7.5 to 240 scfm  
212 to 6800 l/min

› **Power**

5 to 150 hp  
3.7 to 110 kw



**The medium pressure range of industrial air compressors from the technology leader in high pressure features continuous-duty rated, 3-stage, air cooled, pressure lubricated compressors for the most demanding requirements.**

The full-featured control system allows for unattended, automatic operation. Heavy-duty frames and balanced compressor designs do not require a special foundation for installation.

## Medium Pressure

### STANDARD SCOPE OF SUPPLY

- › 3-stage, air cooled, pressure lubricated, continuous-duty rated reciprocating compressor
- › Electric motor (ODP) with v-belt drive, belt guard and belt tensioning device
- › Automatic condensate drain with condensate collector  
Collector includes switch for high condensate level
- › Automatic operation with PLC controller  
Includes operator keypad and text display for operation, maintenance and troubleshooting
- › NEMA 4 rated electrical enclosure with UL listed control panel
- › Fused control voltage transformer
- › Hour meter
- › Pressure sensors for oil pressure and final pressure
- › Temperature switch
- › Emergency stop push button
- › Audible alarm
- › Ambient temperature range 40° to 113° F
- › 12 month warranty

### 50 - 125 hp models

- › Soft starter
- › TEFC motor
- › Circuit breaker disconnect

### AVAILABLE ACCESSORIES

- › TEFC motor (5 - 40 hp)
- › Enclosure
- › Constant speed control

## Technical Data

Model	Capacity FAD <sup>1)</sup>		Number of stages	Motor		Drive
	scfm	l/min		hp <sup>2)</sup>	kw	
<b>350 - 1000 psig (24 - 69 bar)</b>						
B12.4	7.5	212	3	5	3.7	E1 / E3
B22.5	24 - 33	680 - 935	3	15 - 20	11 - 15	E3
B23.4	48 - 61	1360 - 1728	3	30 - 40	22 - 30	E3
B25.4	75	2125	3	50	37	E3
B28.2	98 - 113	2775 - 3200	3	60 - 75	45 - 55	E3
B25.5 <sup>3)</sup>	164	4645	3	100	75	E3
B28.3 <sup>3)</sup>	200 - 240	5665 - 6800	3	125 - 150	93 - 110	E3

1) Compressor capacity (FAD) is referenced to standard inlet conditions and 80% of the compressor's maximum working pressure. Tolerance +/- 5%.

2) 3-phase motors only, 60 Hz standard. 50 Hz available on request.

3) Maximum discharge pressure of 900 psig.

E1 = 230 / 1 / 60 E3 = 230 - 460 / 3 / 60 Other voltages and frequencies available upon request. Engine drives available.

### BAUER COMPRESSORS INC.

1328 Azalea Garden Road | Norfolk, VA 23502

TEL. +1 (757) 855-6006

FAX +1 (757) 857-1041

sls@bauercomp.com

www.bauercomp.com



BAUER COMPRESSORS INC.  
Norfolk, Virginia is  
registered to ISO 9001

### MEDIUM PRESSURE

203.08.11.1SP

subject to alteration without notice or obligation