

## DIMENSIONS FOR G-SERIES PACKAGES

### mini VERTICUS and MAXI VERTICUS



Model	Dimensions L x W x H	Weight
	Inches	Pounds
mini Verticus G100II, G120II, G12.14II, GB12.2II	46 x 32 x 55	750
MAXI Verticus G15.1II, G150II, G15.11II, G180II, G18.1II, GB15.3II	64 x 34 x 66	1025 - 1200

Available without enclosure. Contact BAUER.



### VERTICAL UNITS, 25 - 40 HP

Model	Dimensions L x W x H	Weight
	Inches	Pounds
G220, G22.42	62 x 42 x 72	1500
G23.0, G23.1	80 x 42 x 72	2200



### HORIZONTAL UNITS, 50 - 100 HP

Model	Dimensions L x W x H	Weight
	Inches	Pounds
G250, G280, G25.9, G25.18	114 x 84 x 66	4700 - 5700

**CUSTOM DESIGNS AVAILABLE. Contact Bauer.**

Dimensions and weights are approximate.  
Subject to modification without notice or obligation.

IG226.07.08.1sp





# HIGH PRESSURE INDUSTRIAL COMPRESSORS & BOOSTERS FOR NITROGEN & NOBLE GASES



# STANDARD SCOPE OF SUPPLY FOR G-SERIES PACKAGES



## Compressors for Nitrogen and Noble Gases

MODEL	HP	DRIVE	CAPACITY SCFM (F.G.D.)						NUMBER OF STAGES
			Nitrogen GI	Helium GR	Neon GR	Argon GR	Krypton GR	Xenon GR	
<b>NITROGEN TO 5000 PSI / ALL OTHER GASES TO 3200 PSI</b>									
G_100II	5	E1/E3	4.7	4.2	4.3	4.3	4.3	4.3	3
G_120II	7.5	E1/E3	7	6.3	6.5	6.3	6.4	6.4	3
G_15.1II	10	E1/E3		10.3	10.6	10.4	10.6	10.6	4
	15	E3		13.4	13.9	13.6	13.8	13.8	
G_150II	15	E3	17.5						4
G_180II	20	E3	21.5						4
G_220	25	E3	28	25.1	25.9	25.3	25.7	25.7	4
	30		33	29.6	30.5	29.8	30.3	30.3	
G_23.1	40	E3		38.5	39.8	38.9	39.5	39.5	4
G_23.0	40	E3	48						4
G_250	60	E3	63						4
G_280	75	E3	86						4
	100	E3	117						
<b>NITROGEN TO 6000 PSI / ALL OTHER GASES TO 5000 PSI</b>									
G_12.14II	7.5	E1/E3	8.5						4
G_15.11II	10	E1/E3	11.4						4
	15	E3	15						
G_18.1II	20	E3	20	17.9	18.5	18.1	18.4	18.4	5
G_22.42	25	E3	28						4
	30		33						
G_25.9	60	E3	58	52.0	53.7	52.5	53.3	53.3	5
G_25.18	75	E3	79						5

Designation for Nitrogen is GI . Designation for Noble Gases is GR.

## Boosters for Nitrogen & Air

## 5000 Maximum Discharge Pressure\*

MODEL	HP	INLET PRESSURE	CAPACITY SCFM (F.G.D.)						NUMBER OF STAGES
			Nitrogen	Helium	Neon	Argon	Krypton	Xenon	
GB12.2II	5	72 -159	5 - 17						2
	7.5								
GB15.3II	10	100 - 145	14 - 27						2
	15								

\* Boosters can be used with other listed gases to 3200 PSI; however, crankcase is vented to atmosphere.

SCFM = Standard Cubic Feet per Minute  
Tolerance on capacity +/- 5%.  
Maximum Inlet Pressure: 1.5 PSIG

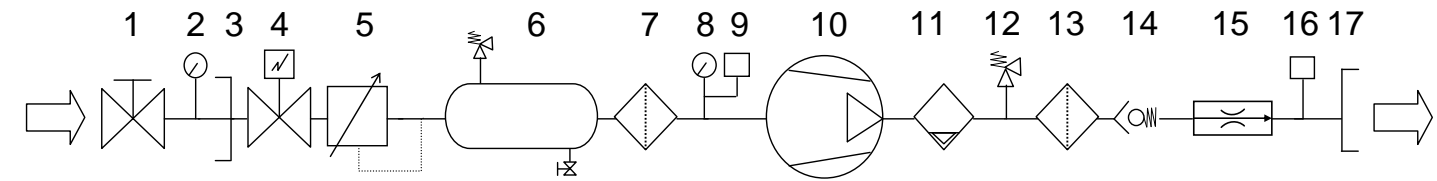
F.G.D. = Free Gas Delivery  
Referenced to atmospheric intake and 80% of compressor's maximum working pressure.

E1 = 230 / 1 / 60  
E3 = 460 / 3 / 60

- Bauer continuous-duty rated, aircooled, multi-stage, reciprocating compressor or booster.
- Electric motor drive with ODPmotor, v-belt drive with tensioning device and guarding.
- Automatic condensate drain system with condensate collector.
- Proprietary PLC-based control system with UL Listed electrical panel.
- NEMA 4 electrical enclosure.
- Automatic start-stop control.
- Full-voltage motor starter.
- Fused control voltage transformer.
- Operator keypad for start, stop, reset.
- Backlit LCD display.
- Emergency stop pushbutton.
- Hourmeter.
- Gauge panel.
- Low / High inlet pressure switch with gauge.
- High temperature switch.
- Pressure lubrication with oil filter, switch for low oil pressure fault and gauge.
- Final pressure switch.
- Solenoid valve at inlet (normally closed).
- Buffer tank at inlet.
- Inlet filter with threaded inlet connection.
- Coalescing separator at outlet.
- Sound attenuated enclosure standard on mini Verticus and MAXI Verticus packages. Mini Verticus and MAXI Verticus available without enclosure. Enclosure available for Large Vertical and Large Horizontal packages.
- Ambient temperature range: 40 to 113 degrees F.
- Warranty: 1 year.



GI15.1 II  
Open Vertical



- |                                      |                                       |
|--------------------------------------|---------------------------------------|
| 1. Shutoff Valve, Customer Supplied  | 10. Compressor / Booster              |
| 2. Pressure Gauge, Customer Supplied | 11. Final Coalescing Separator        |
| 3. Threaded Inlet                    | 12. Final Safety Valve                |
| 4. Inlet Solenoid Valve              | 13. Oil Removal Filtration, Available |
| 5. Inlet Regulator, available        | 14. Check Valve                       |
| 6. Inlet Buffer Tank                 | 15. Pressure Maintaining Valve        |
| 7. Inlet Filter                      | 16. Final Pressure Switch             |
| 8. Inlet Pressure Gauge              | 17. Threaded Outlet                   |
| 9. Inlet Pressure / Vacuum Switch    |                                       |

## THE COMPLETE RANGE

PRICES SUBJECT TO CHANGE WITHOUT PRIOR NOTICE OR OBLIGATION.  
FOB NORFOLK, VIRGINIA, STANDARD COMMERCIAL PACKING INCLUDED.

## THE COMPLETE PACKAGE

PRICES SUBJECT TO CHANGE WITHOUT PRIOR NOTICE OR OBLIGATION.  
FOB NORFOLK, VIRGINIA, STANDARD COMMERCIAL PACKING INCLUDED.