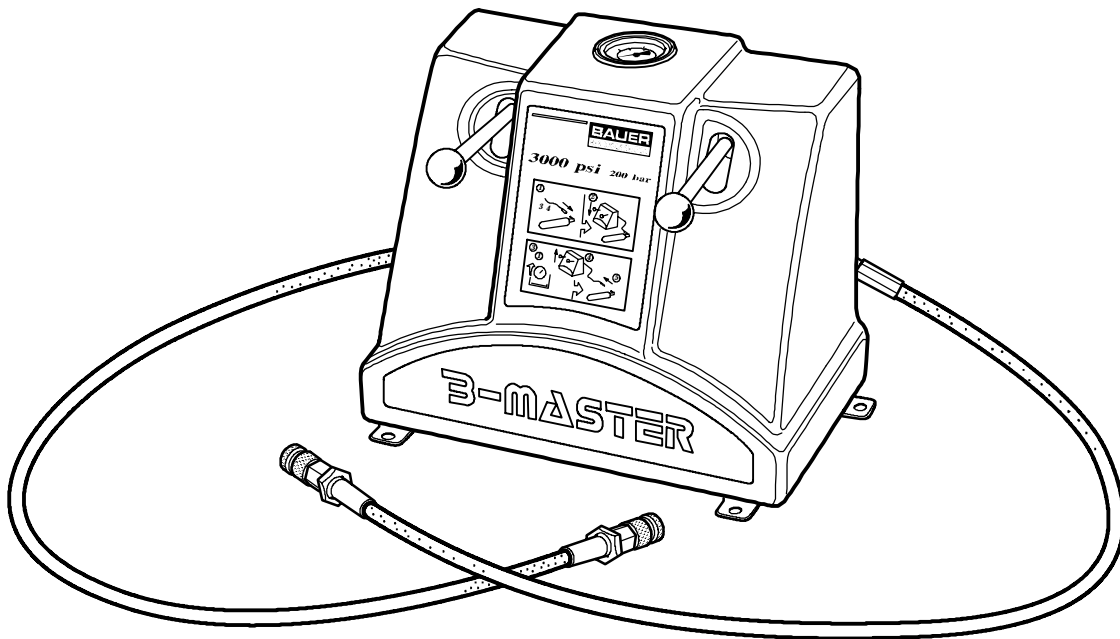


| | | |
|-----------------------|-------|---------------------|
| Ersatzteilliste | G63.0 | Füllpanel |
| Spare parts catalogue | G63.0 | Filling Panel |
| Liste des pièces | G63.0 | Pupitre de gonflage |



B-Master

| Baugruppe | Assembly | Assemblage | Bild/Fig. |
|--------------------------------|---------------------------------|--|-----------|
| B-Master mini | B-Master mini | B-Master mini | G63.0- 1 |
| B-Master midi | B-Master midi | B-Master midi | G63.0- 2 |
| B-Master maxi | B-Master maxi | B-Master maxi | G63.0- 3 |
| Füllventil 81201 | Filling valve 81201 | Vanne de gonflage 81201 | G63.0- 4 |
| Füllschlauch kpl. PN350, 82228 | Filling hose assy. PN350, 82228 | Flexible de gonflage cpl. PN350, 82228 | G63.0- 5 |



| Änder.-Nr. Change no. No. de change | Datum Date | Änderung | Change | Changement |
|---|---------------|--------------|---------------|-----------------|
| 0 | 01.11.2003 | Grundausgabe | Basic edition | Edition de base |
| | | | | |
| | | | | |
| | | | | |

Wichtige Hinweise für Teilebestellung:

Bestell-Nr., die mit der Ziffer 0 beginnen, bezeichnen Baugruppen, die komplett geliefert werden. Teile ohne Bestell-Nr. sind nur zur Information für die Montage aufgeführt. Sie sind nicht als Ersatzteil erhältlich. Bei Ersatzteilbestellungen erwarten Sie unsere richtige Lieferung; deshalb benötigen wir von Ihnen folgende Angaben (siehe unten gezeigtes Typenschild):

1. Modellbezeichnung, Fabrik-Nr. sowie Fertigungsstand von Anlage/Block
2. Stückzahlen
3. Benennung und Best.-Nr. des gewünschten Teils

Bestell-Beispiel:

Für Kompressorblock ...
Fabrik-Nr. 524-0528/1/2 drei Dichtungen
8263-090

Important notes for spare parts orders:

Part nos. beginning with digit 0 indicate parts available as complete assemblies. Parts without part no. are indicated for assembly reference, only. These parts are not available as single parts. When placing an order for spare parts, please give the following items so as to ensure our correct delivery (see identification plate shown below):

1. Model, serial no. as well as design standard of unit/block
2. Quantity required
3. Name and part no.

Example for order:

For compressor block ...
serial no. 524-0528/1/2, three gaskets
8263-090

Avis important pour la commande de pièces:

Les nos. de commande commençant par le chiffre 0 indiquent les pièces livrées au complet. Les pièces sans no. de commande sont indiquées uniquement pour information de montage. Elles ne sont pas livrées individuellement. Pour que la livraison de pièces de rechange corresponde à la commande, veuillez bien nous fournir les données suivantes (voir plaque d'identité ci-dessous):

1. Modèle, no. de série et standard de construction de bloc compresseur/groupe
2. Quantité désirée
3. Dénomination et no. de commande de la pièce désirée

Exemple de commande:

Pour bloc compresseur ...
no. de série 524-0528/1/2, trois joints no. de cde. 8263-090



Wartungssätze

- a =Wartungssatz 1000 h
- b =Wartungssatz 2000 h
- c =Wartungssatz 4000 h



Maintenance kit

- a = Maintenance kit 1000 h
- b = Maintenance kit 2000 h
- c = Maintenance kit 4000 h



Kits de pièces d'entretien :

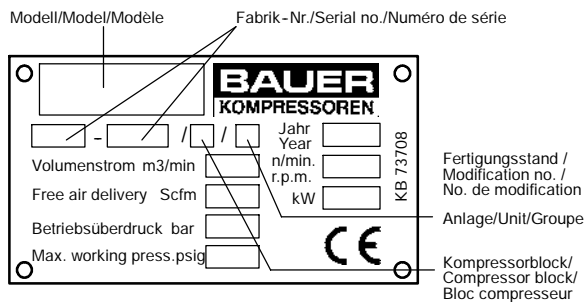
- a = Kit d'entretien 1000 h
- b = Kit d'entretien 2000 h
- c = Kit d'entretien 4000 h

In den Spalten sind die im entsprechenden Satz enthaltenen Teile angekreuzt. Bitte beachten, daß die höheren Sätze die untergeordneten nicht beinhalten, d.h. für eine 4000-Stunden-Wartung wird 1x Satz a, 1x Satz b und 1x Satz c benötigt.

The columns contain the parts that are included in the respective parts set. Please note that the higher graded kits do not include the lower ones, i.e. for a 4000 hours maintenance, one kit a, one kit b plus one kit c are required.

Les pièces contenues dans les kits correspondants sont marquées d'une croix dans les colonnes. Veuillez observer que les kits supérieurs ne contiennent pas les kits subordonnés, c'est-à-dire pour un entretien de 4000 heures il faut avoir 1x kit a, 1x kit b et 1x kit c.

Anmerkungen zur Identifikation:
Remarks for identification:
Remarques pour l'identification:



ACHTUNG

Nur Schrauben und Stiftschrauben der Qualität 8.8 verwenden!



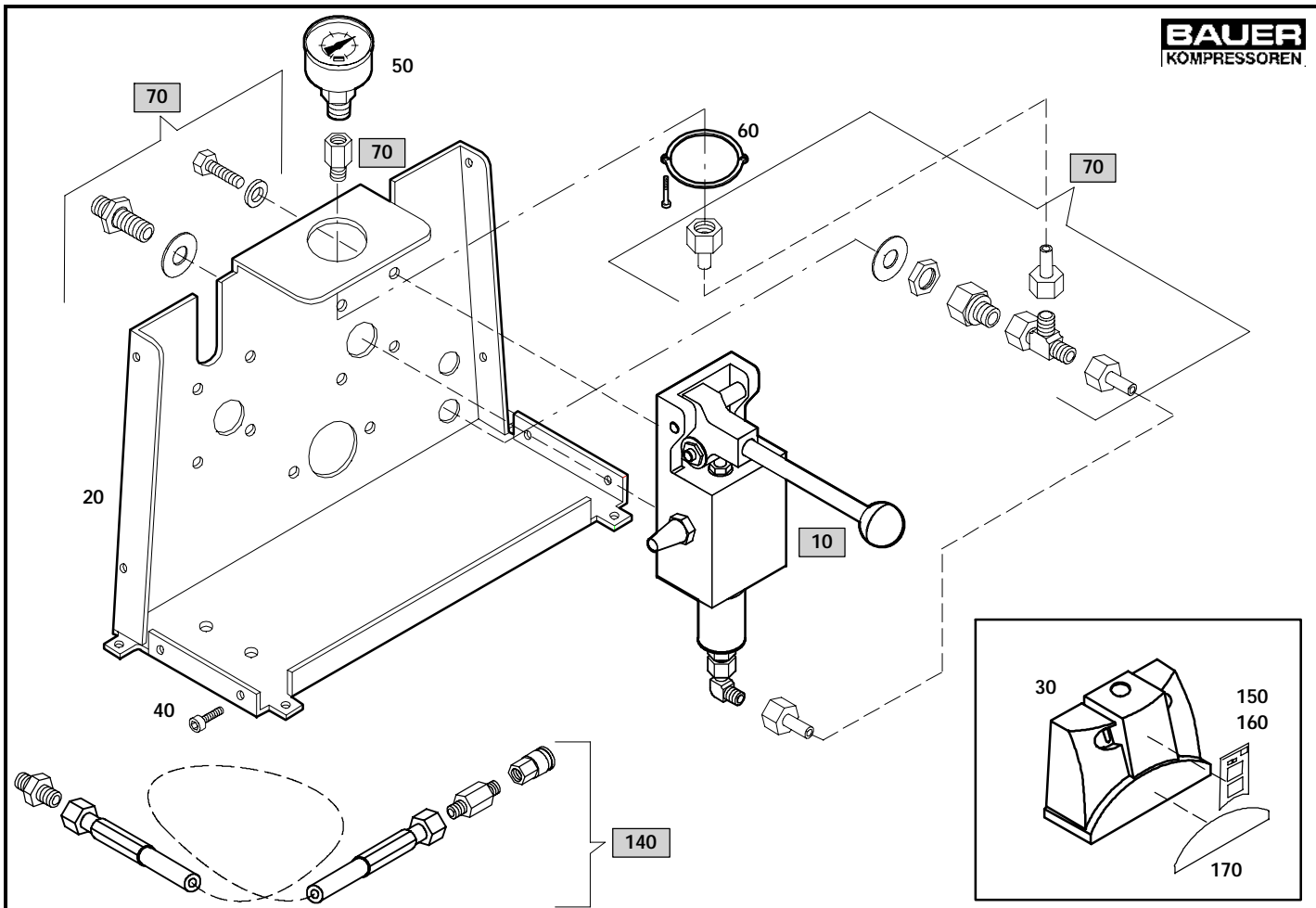
ATTENTION

Use only screws and studs in quality 8.8! This quality is equivalent to SAE J 429 d grade 5.



ATTENTION

N'utiliser que des vis et des goujons filetés de la qualité 8.8!

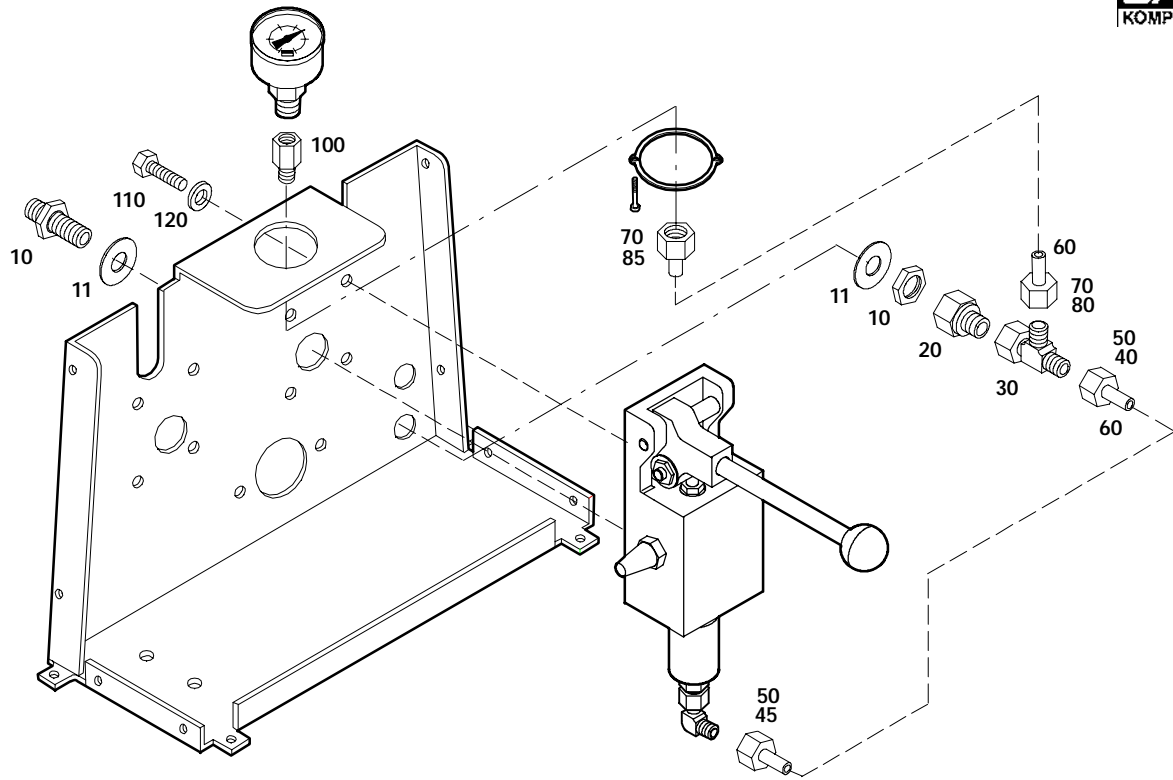


Wartungssätze
 Maintenance kits
 Kits d'entretien

Baugruppe B-Master Mini
 Assembly B-Master Mini
 Assemblage B-Master Mini

G63.0- 1

| Klasse/ Class/ Classe | | | Pos | Bestell-Nr. Part No. No. de cde. | Anz Qty. Qté. | Benennung | Designation | Dénomination |
|-----------------------------|---|---|-----|--|---------------------|----------------------------|-----------------------|---------------------------|
| a | b | c | | | | | | |
| | | | 10 | 81201 | 1 | Füllventil | filling valve | vanne de gonflage |
| | | | 20 | 81535 | 1 | Rahmen | frame | cadre |
| | | | 30 | 81562 | 1 | Gehäuse | housing | capot |
| | | | 40 | N25546 | 8 | Blechschaube | screw | vis |
| | | | 50 | N26779 | 1 | Manometer 0-400bar | manometer 0-400bar | manomètre 0-400bar |
| | | | 60 | N26785 | 1 | Halterung | bracket | fixation |
| | | | 70 | 81711 | 1 | Befestigungssatz | connecting set | set de raccordement |
| | | | 140 | 82228 | 1 | Füllschlauch kpl. | filling hose assy. | flexible de gonflage cpl. |
| | | | 150 | 81896 | 1 | Klebeschild 200bar | sticker 200bar | autocollant 200bar |
| | | | 160 | 81897 | 1 | Klebeschild 300 bar | sticker 300bar | autocollant 300bar |
| | | | 170 | 81898 | 1 | Klebeschild B-Master-Logo | sticker B-Master-Logo | autocollant logo B-Master |
| | | | 180 | 3723 | 1 | Typenschild mit CE-Zeichen | identification plate | plaque d'identification |
| | | | 190 | 63103 | 1 | Schild Aus (Ausgang) | sticker Out (Outlet) | autocollant Sortie |
| | | | 200 | 63100 | 1 | Schild Ein (Eingang) | sticker In (Inlet) | autocollant Entrée |
| | | | 210 | N3333 | 1 | Blindniet | pop rivet | rivet pop |

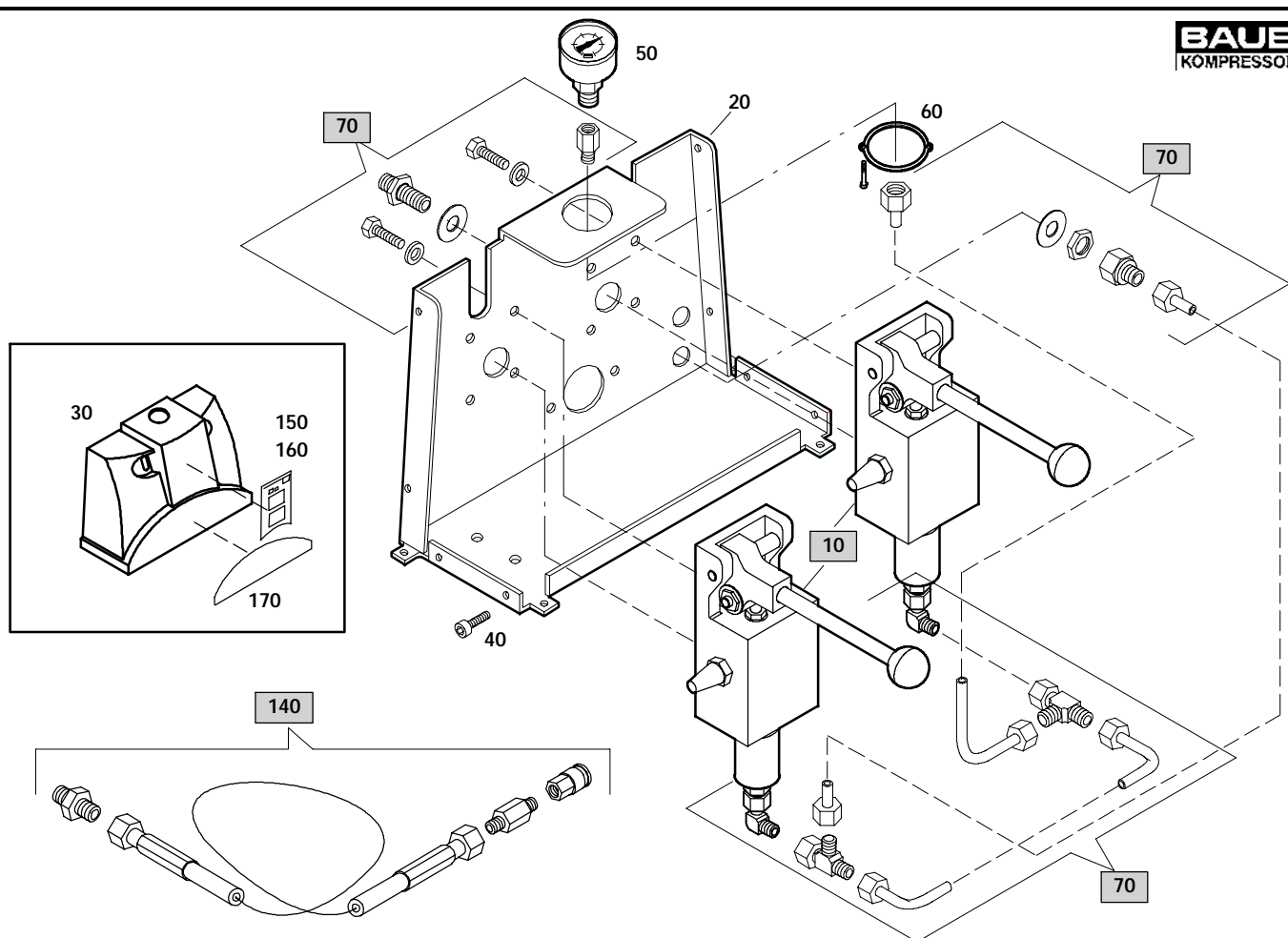

 Wartungssätze
 Maintenance kits
 Kits d'entretien

 Baugruppe 81711
 Assembly 81711
 Assemblage 81711

 Befestigungsatz
 Connecting set
 Set de raccordement

G63.0- 1a

| Klasse/ Class/ Classe | | | Pos | Bestell-Nr. Part No. No. de cde. | Anz Qty. Qté. | Benennung | Designation | Dénomination |
|-----------------------------|---|---|-----|--|---------------------|-----------------------------|----------------------------|-------------------------|
| a | b | c | | | | | | |
| | | | 10 | N20183 | 1 | G-Schottstutzen | straight bulkhead coupling | raccord passe-cloison |
| | | | 11 | N1219 | 2 | Scheibe | washer | rondelle |
| | | | 20 | N20184 | 1 | Reduzierstutzen | reducer | réducteur |
| | | | 30 | N20167 | 1 | Einst. L-Stutzen | adjustable L coupling | raccord L orientable |
| | | | 40 | N3610 | 2 | Überwurfmutter M 6 S | screw cap M 6 S | écrou-chapeau M 6 S |
| | | | 45 | N7430 | 1 | Überwurfmutter M 6 L | screw cap M 6 L | écrou-chapeau M 6 L |
| | | | 50 | N3663 | 2 | Schneidring | cutting ring | bague coupante |
| | | | 60 | N3616 | 500 | Rohr | tube | tuyau |
| | | | 70 | N3663 | 2 | Schneidring | cutting ring | bague coupante |
| | | | 80 | N3610 | 1 | Überwurfmutter M 6 S | screw cap M 6 S | écrou-chapeau M 6 S |
| | | | 85 | N7430 | 1 | Überwurfmutter M 6 L | screw cap M 6 L | écrou-chapeau M 6 L |
| | | | 90 | N20001 | 1 | W-Einschraubstutzen | elbow coupling | coude |
| | | | 100 | N26956 | 1 | Manometer-Aufschraubstutzen | manometer adapter | adaptateur p. manomètre |
| | | | 110 | N2139 | 4 | Sechskantschraube | hex. screw | vis six pans |
| | | | 120 | N102 | 4 | Scheibe | washer | rondelle |

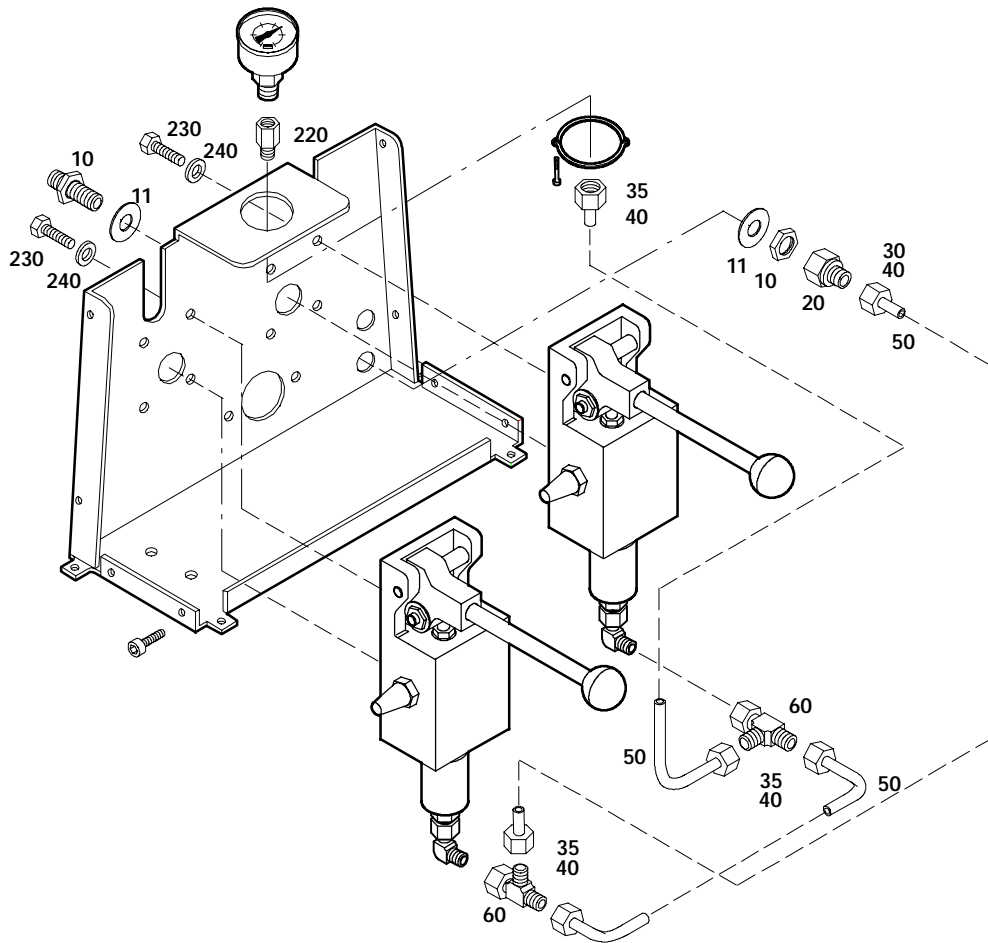


Wartungssätze
 Maintenance kits
 Kits d'entretien

Baugruppe B-Master Midi
 Assembly B-Master Midi
 Assemblage B-Master Midi

G63.0- 2

| Klasse/ Class/ Classe | | | Pos | Bestell- Nr. Part No. No. de cde. | Anz Qty. Qté. | Benennung | Designation | Dénomination |
|-----------------------------|---|---|-----|---|---------------------|----------------------------|---------------------------|----------------------------------|
| a | b | c | | | | | | |
| | | | 10 | 81201 | 2 | Füllventil | filling valve | vanne de gonflage |
| | | | 20 | 81535 | 1 | Rahmen | frame | cadre |
| | | | 30 | 81562 | 1 | Gehäuse | housing | capot |
| | | | 40 | N25546 | 8 | Blehschraube | screw | vis |
| | | | 50 | N26779 | 1 | Manometer 0-400bar | manometer 0-400bar | manomètre 0-400bar |
| | | | 60 | N26785 | 1 | Halterung | bracket | fixation |
| | | | 70 | 81712 | 1 | Befestigungssatz | connecting set | set de raccordement |
| | | | 140 | 82228 | 2 | Füllschlauch kpl. | filling hose assy. | flexible de gonflage cpl. |
| | | | 150 | 81896 | 1 | Klebeschild 200bar | sticker 200bar | autocollant 200bar |
| | | | 160 | 81897 | 1 | Klebeschild 300 bar | sticker 300bar | autocollant 300bar |
| | | | 170 | 81898 | 1 | Klebeschild B-Master-Logo | sticker B-Master-Logo | autocollant logo B-Master |
| | | | 180 | 3723 | 1 | Typenschild mit CE-Zeichen | identification plate | plaque d'identification |
| | | | 190 | 63103 | 1 | Schild Aus (Ausgang) | sticker Out (Outlet) | autocollant Sortie |
| | | | 200 | 63100 | 1 | Schild Ein (Eingang) | sticker In (Inlet) | autocollant Entrée |
| | | | 210 | N3333 | 1 | Blindniet | pop rivet | rivet pop |

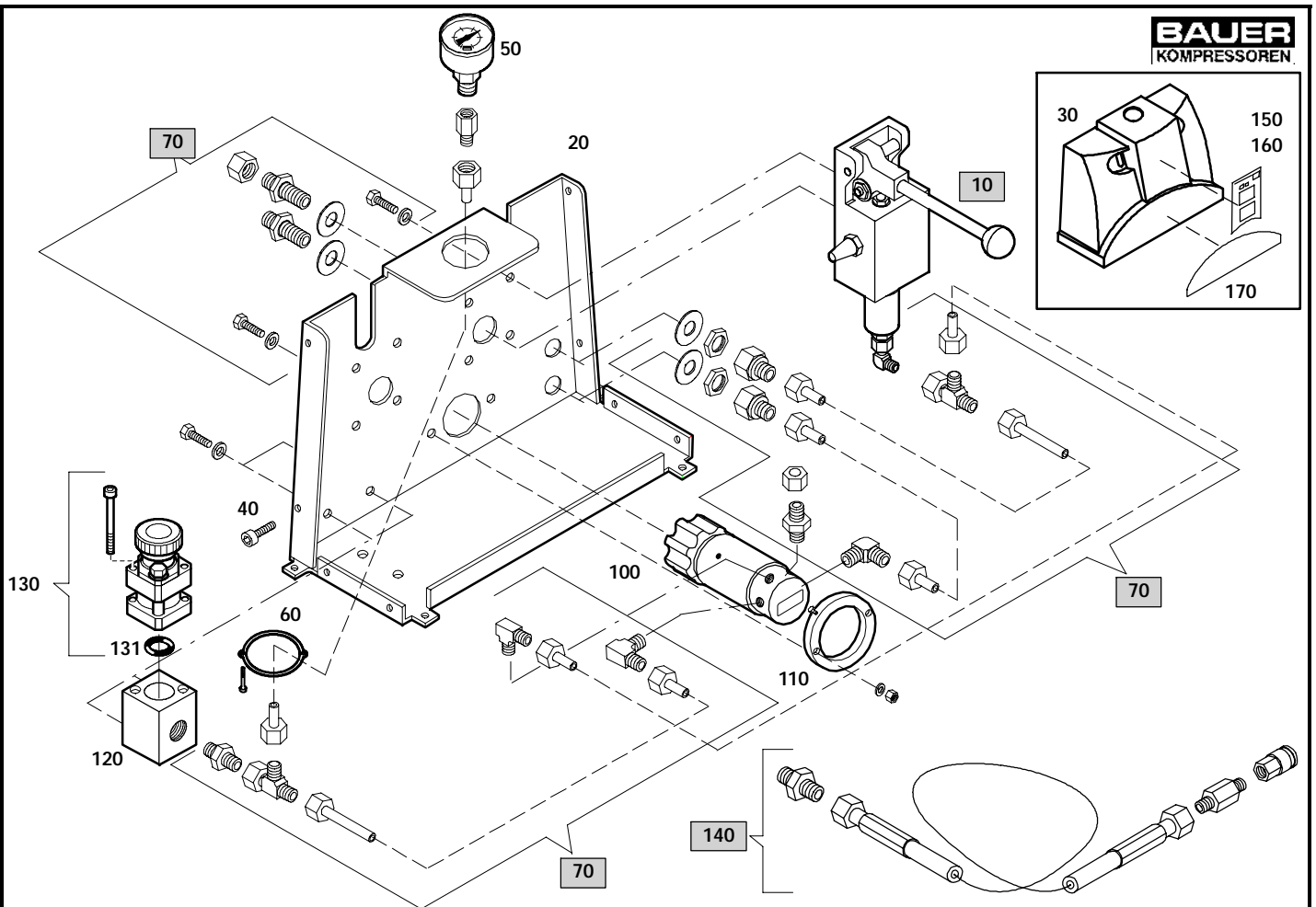

 Wartungssätze
 Maintenance kits
 Kits d'entretien

 Baugruppe 81712
 Assembly 81712
 Assemblage 81712

 Befestigungsatz
 Connecting set
 Set de raccordement

G63.0- 2a

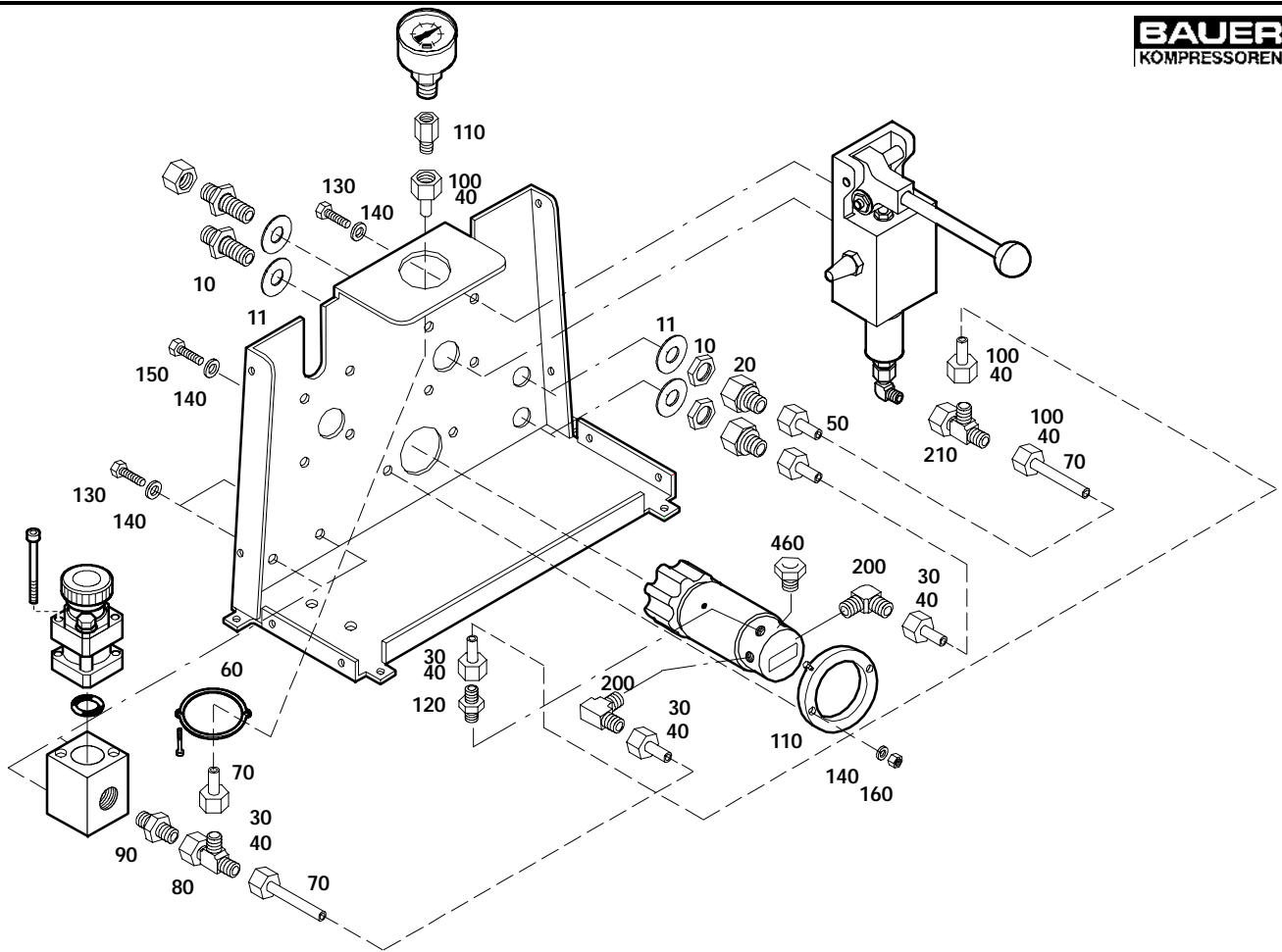
| Klasse/ Class/ Classe | | | Pos | Bestell-Nr. Part No. No. de cde. | Anz Qty. Qté. | Benennung | Designation | Dénomination |
|-----------------------------|---|---|-----|--|---------------------|-----------------------------|----------------------------|-------------------------|
| a | b | c | | | | | | |
| | | | 10 | N20183 | 1 | G-Schottstutzen | straight bulkhead coupling | raccord passe-cloison |
| | | | 11 | N1219 | 2 | Scheibe | washer | rondelle |
| | | | 20 | N20184 | 1 | Reduzierstutzen | reducer | réducteur |
| | | | 30 | N3610 | 1 | Überwurfmutter M 6 S | screw cap M 6 S | écrou-chapeau M 6 S |
| | | | 35 | N7430 | 5 | Überwurfmutter M 6 L | screw cap M 6 L | écrou-chapeau M 6 L |
| | | | 40 | N3663 | 6 | Schneidring | cutting ring | bague coupante |
| | | | 50 | N3616 | 750 | Rohr | tube | tuyau |
| | | | 60 | N20167 | 2 | Einst. L-Stutzen | adjustable L coupling | raccord L orientable |
| | | | 80 | N26956 | 1 | Manometer-Aufschraubstutzen | manometer adapter | adaptateur p. manomètre |
| | | | 90 | N2139 | 8 | Sechskantschraube | hex. screw | vis six pans |
| | | | 100 | N102 | 8 | Scheibe | washer | rondelle |


 Wartungssätze
 Maintenance kits
 Kits d'entretien

 Baugruppe B-Master Maxi
 Assembly B-Master Maxi
 Assemblée B-Master Maxi

G63.0- 3

| Klasse/ Class/ Classe | | | Pos | Bestell-Nr. Part No. No. de cde. | Anz Qty. Qté. | Benennung | Designation | Dénomination |
|-----------------------------|---|---|-----|--|---------------------|------------------------------|-------------------------|-----------------------------|
| a | b | c | | | | | | |
| | | | 10 | 81201 | 1 | Füllventil | filling valve | vanne de gonflage |
| | | | 20 | 81535 | 1 | Rahmen | frame | cadre |
| | | | 30 | 81562 | 1 | Gehäuse | housing | capot |
| | | | 40 | N25546 | 8 | Blechschaube | screw | vis |
| | | | 50 | N26779 | 1 | Manometer 0-400bar | manometer 0-400bar | manomètre 0-400bar |
| | | | 60 | N26785 | 1 | Halterung | bracket | fixation |
| | | | 70 | 81713 | 1 | Befestigungssatz | connecting set | set de raccordement |
| | | | 100 | N21826 | 1 | Druckminderer 420bar | pressure reducer 420bar | détendeur 420 bar |
| | | | 110 | 74039 | 1 | Halterung | bracket | fixation |
| | | | 120 | 81336 | 1 | Flansch | flange | adaptateur |
| | | | 130 | 059410 | 1 | Sicherheitsventil 100-365bar | safety valve 100-365bar | soupape de sûreté 100-365ba |
| | | | 131 | N4882 | 1 | O-Ring | o-ring | joint torique |
| | | | 140 | 82228 | 1 | Füllschlauch kpl. | filling hose assy. | flexible de gonflage cpl. |
| | | | 150 | 81896 | 1 | Klebeschild 200bar | sticker 200bar | autocollant 200bar |
| | | | 160 | 81897 | 1 | Klebeschild 300 bar | sticker 300bar | autocollant 300bar |
| | | | 170 | 81898 | 1 | Klebeschild B-Master-Logo | sticker B-Master-Logo | autocollant logo B-Master |
| | | | 180 | 3723 | 1 | Typenschild mit CE-Zeichen | identification plate | plaque d'identification |
| | | | 190 | 63103 | 1 | Schild Aus (Ausgang) | sticker Out (Outlet) | autocollant Sortie |
| | | | 200 | 63100 | 1 | Schild Ein (Eingang) | sticker In (Inlet) | autocollant Entrée |
| | | | 210 | N3333 | 1 | Blindniet | pop rivet | rivet pop |

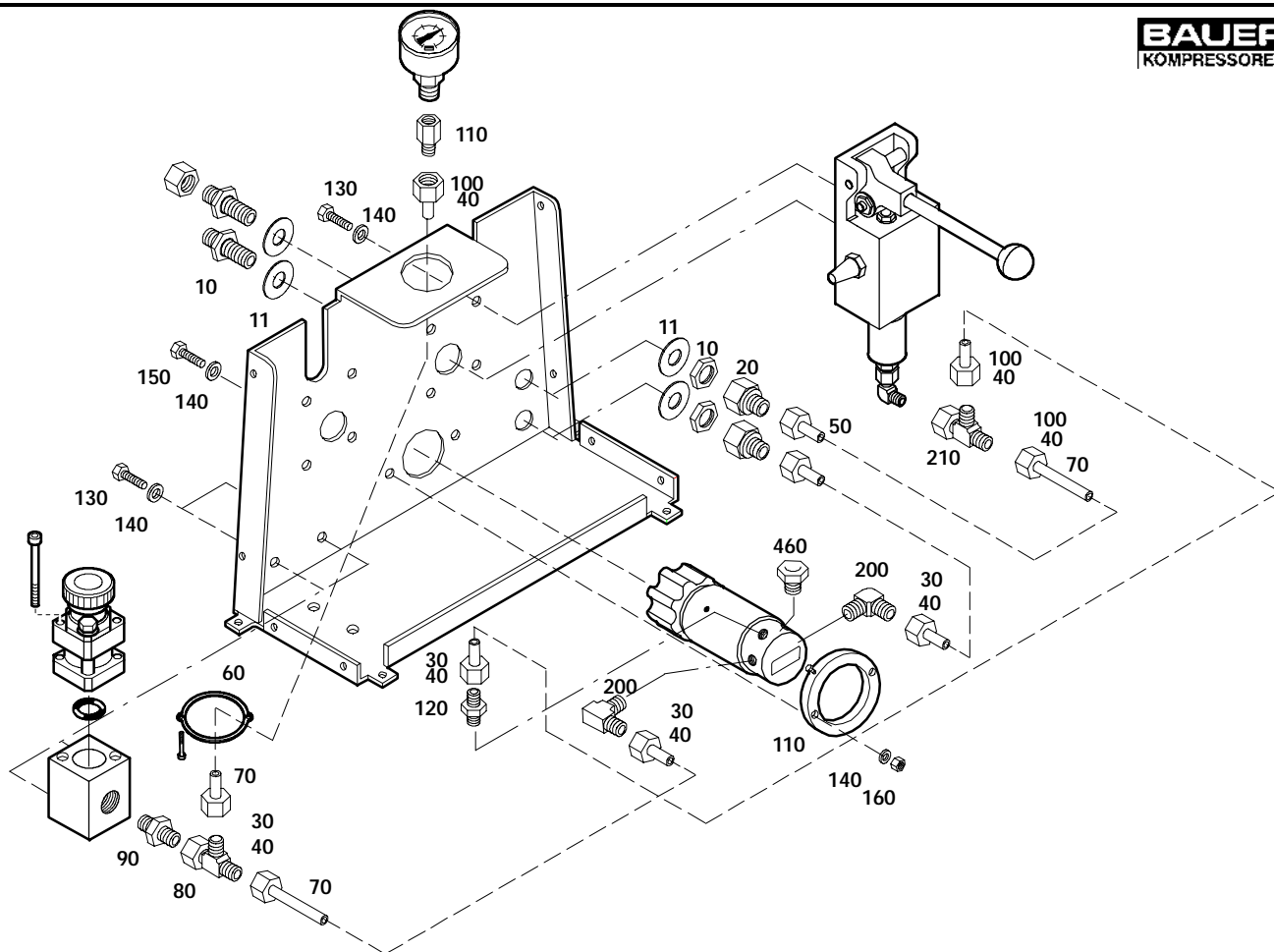

 Wartungssätze
 Maintenance kits
 Kits d'entretien

 Baugruppe 81713
 Assembly 81713
 Assemblage 81713

 Befestigungsatz
 Connecting set
 Set de raccordement

G63.0- 3a

| Klasse/ Class/ Classe | | | Pos | Bestell-Nr. Part No. No. de cde. | Anz Qty. Qté. | Benennung | Designation | Dénomination |
|-----------------------------|---|---|-----|--|---------------------|-----------------------------|----------------------------|-------------------------|
| a | b | c | | | | | | |
| | | | 10 | N20183 | 2 | G-Schottstutzen | straight bulkhead coupling | raccord passe-cloison |
| | | | 11 | N1219 | 4 | Scheibe | washer | rondelle |
| | | | 20 | N20184 | 2 | Reduzierstutzen | reducer | réducteur |
| | | | 30 | N3610 | 7 | Überwurfmutter M 6 S | screw cap M 6 S | écrou-chapeau M 6 S |
| | | | 40 | N3663 | 11 | Schneidring | cutting ring | bague coupante |
| | | | 50 | N3617 | 150 | Rohr 6x1.5 | tube | tuyau |
| | | | 70 | N3616 | 550 | Rohr 6x1.4541 | tube | tuyau |
| | | | 80 | N20185 | 1 | Einst. L-Stutzen | adjustable L coupling | raccord L orientable |
| | | | 70 | N3663 | 2 | Schneidring | cutting ring | bague coupante |
| | | | 80 | N3610 | 1 | Überwurfmutter M 6 S | screw cap M 6 S | écrou-chapeau M 6 S |
| | | | 90 | N20211 | 1 | G-StutzenGES 6SR-WD | straight coupling | raccord |
| | | | 100 | N7430 | 3 | Überwurfmutter M 6 L | screw cap M 6 L | écrou-chapeau M 6 L |
| | | | 110 | N26956 | 1 | Manometer-Aufschraubstutzen | manometer adapter | adaptateur p. manomètre |
| | | | 120 | N20264 | 1 | G-Einschraubstutzen GES 6S | straight coupling | raccord |
| | | | 130 | N2139 | 4 | Sechskantschraube | hex. screw | vis six pans |
| | | | 140 | N102 | 8 | Scheibe | washer | rondelle |
| | | | 150 | N19458 | 2 | Sechskantschraube | hex. screw | vis six pans |
| | | | 160 | N1042 | 2 | Sechskantmutter | hex. nut | écrou six pans |
| | | | 170 | N2139 | 2 | Sechskantschraube | hex. screw | vis six pans |
| | | | 180 | N19555 | 2 | Zylinderschraube | allen screw | vis allen |
| | | | 190 | N19553 | 2 | Zylinderschraube | allen screw | vis allen |

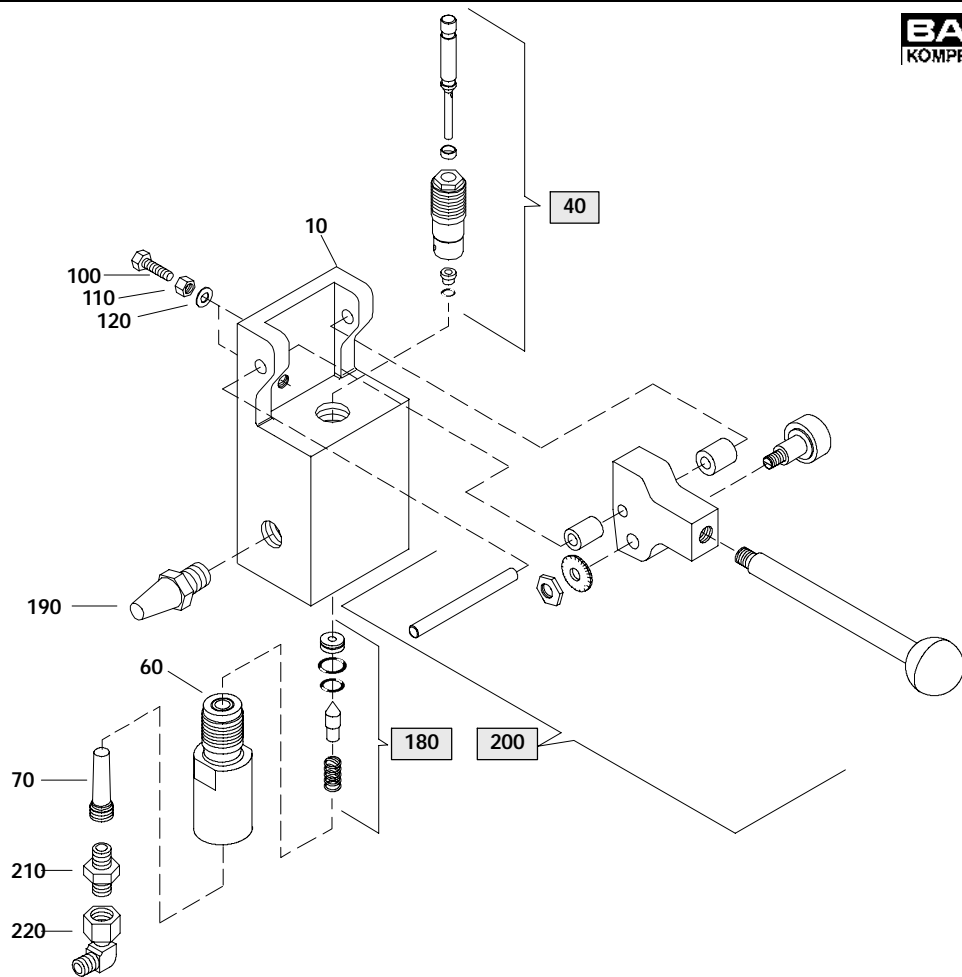
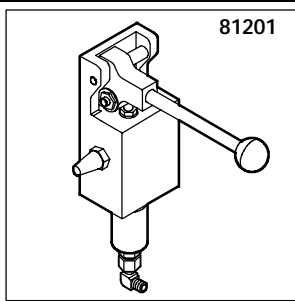

 Wartungssätze
 Maintenance kits
 Kits d'entretien

 Baugruppe 81713
 Assembly 81713
 Assemblage 81713

 Befestigungsatz
 Connecting set
 Set de raccordement

G63.0- 3a

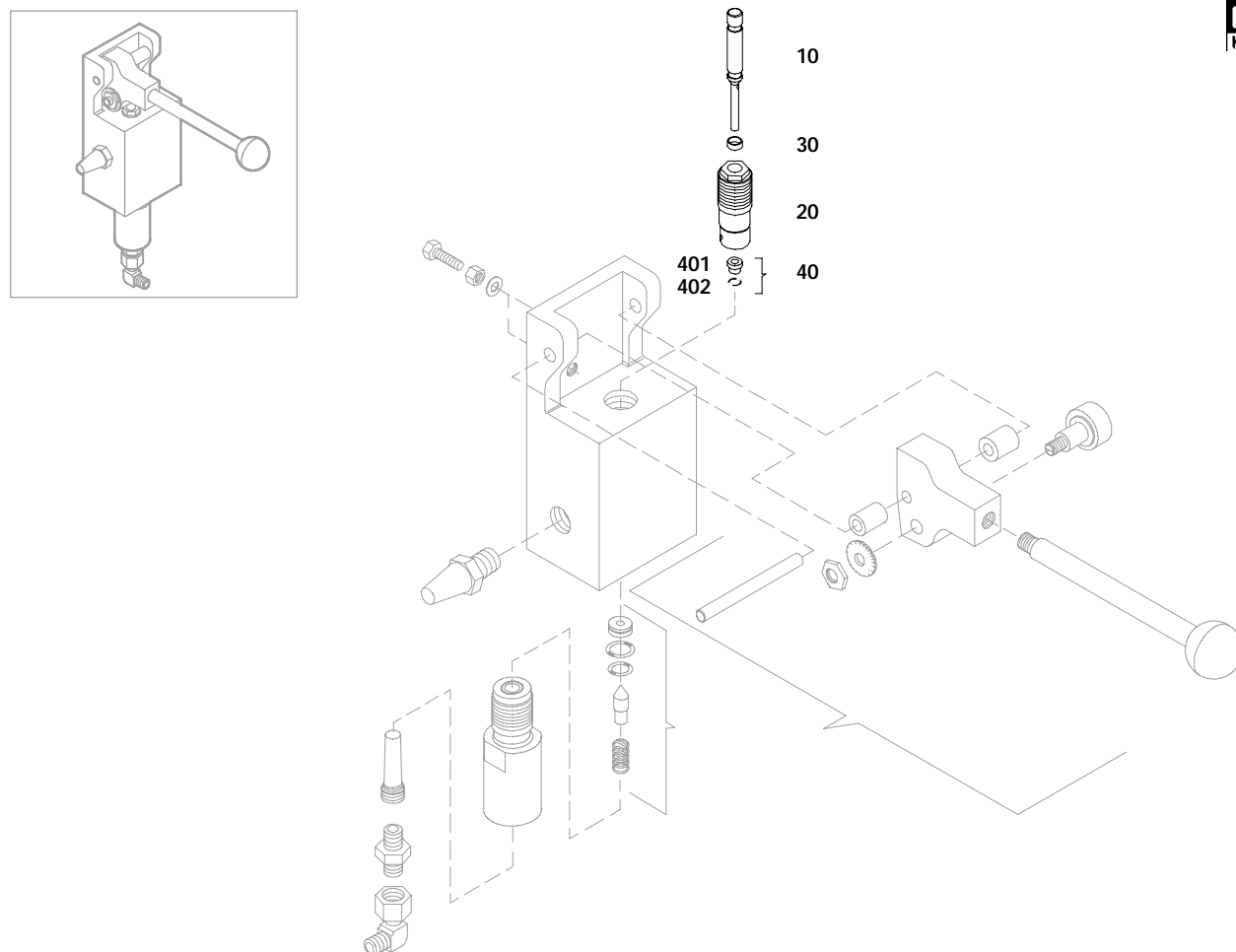
| Klasse/ Class/ Classe | | | Pos | Bestell-Nr. Part No. No. de cde. | Anz Qty. Qté. | Benennung | Designation | Dénomination |
|-----------------------------|---|---|-----|--|---------------------|---------------------|-----------------------|----------------------|
| a | b | c | | | | | | |
| | | | 200 | N20265 | 2 | W-Einschraubstutzen | elbow coupling | coude |
| | | | 210 | N20167 | 1 | Einst. L-Stutzen | adjustable L coupling | raccord L orientable |
| | | | 460 | N4472 | 1 | Verschlußschraube | plugging screw | vis d'obturation |


 Wartungssätze
 Maintenance kits
 Kits d'entretien

 Baugruppe 81201 Füllventil kpl.
 Assembly 81201 Filling valve assy.
 Assemblage 81201 Vanne de gonflage cpl.

G63.0- 4

| Klasse/ Class/ Classe | | | Pos | Bestell-Nr. Part No. No. de cde. | Anz Qty. Qté. | Benennung | Designation | Dénomination |
|-----------------------------|---|---|-----|--|---------------------|---------------------|------------------------|------------------------|
| a | b | c | | | | | | |
| | | | 10 | 81201-01 | 1 | Ventilkörper | valve housing | corps de vanne |
| | | | 40 | 81202 | 1 | Kolben kpl. | piston assy. | piston cpl. |
| | | | 60 | 83229 | 1 | Einschraubteil | coupling | raccord |
| | | | 70 | 63832 | 1 | Sinterfilter | filter insert | filtre en métal fritté |
| | | | 100 | N19496 | 2 | Sechskantschraube | hex. screw | vis six pans |
| | | | 110 | N1042 | 2 | Sechskantmutter | hex. nut | écrou six pans |
| | | | 120 | N102 | 2 | Scheibe | washer | rondelle |
| | | | 180 | 81416 | 1 | Ventilsitz kpl. | valve seat assy. | siège cpl. |
| | | | 190 | N25971 | 1 | Schalldämpfer | silencer | silencieux |
| | | | 200 | 81208-01 | 1 | Hebel kpl. | lever assy. | levier cpl. |
| | | | 210 | N20237 | 1 | G-Einschraubstutzen | coupling | raccord |
| | | | 220 | N20186 | 1 | Einst. W-Stutzen | adjust. elbow coupling | coude orientable |


 Wartungssätze
 Maintenance kits
 Kits d'entretien

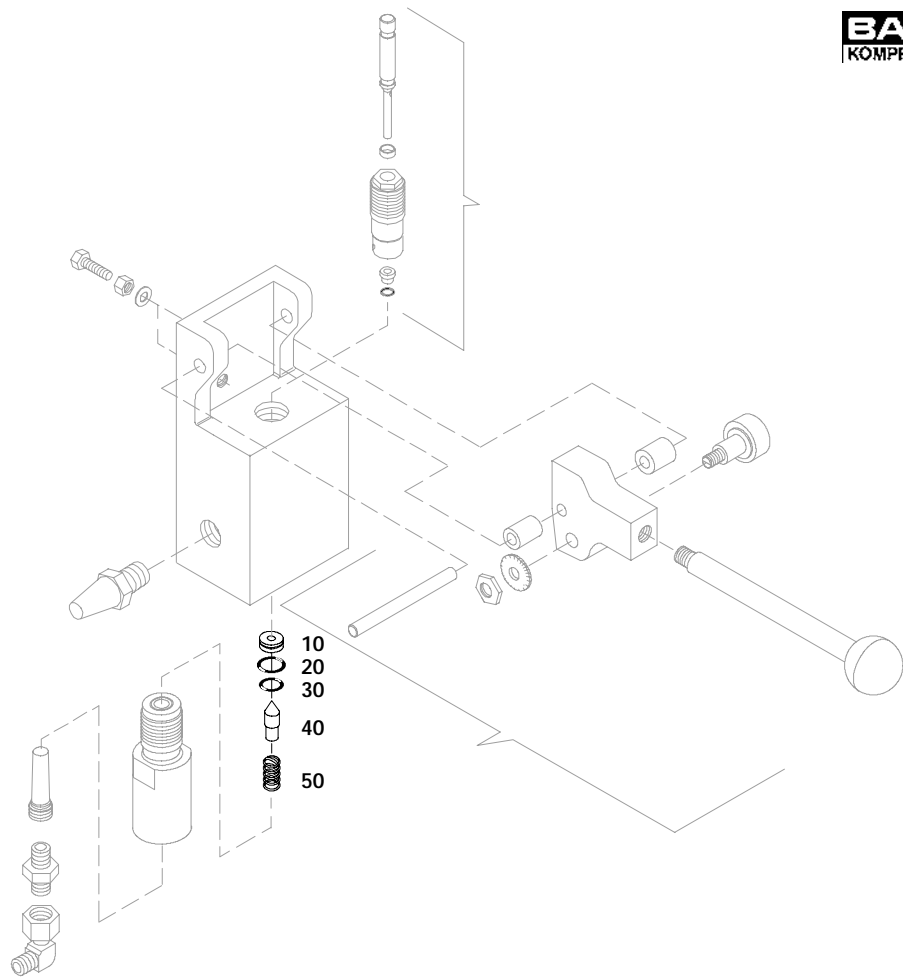
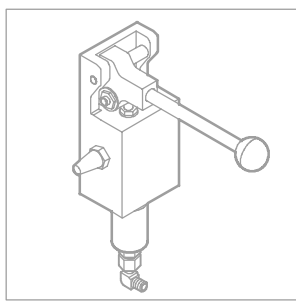
 Baugruppe 81202
 Assembly 81202
 Assemblage 81202

 Kolben kpl.
 Piston assy.
 Piston cpl.

G63.0- 4a

| Klasse/ Class/ Classe | | | Pos | Bestell-Nr. Part No. No. de cde. | Anz Qty. Qté. | Benennung | Designation | Dénomination |
|-----------------------------|---|---|-----|--|---------------------|---------------|--------------|--------------|
| a | b | c | | | | | | |
| | | | 10 | 81201-02 | 1 | Kolben | piston | piston |
| | | | 20 | 81212 | 1 | Buchse | sleeve | chemise |
| | | | 30 | N26794 | 2 | Führung | guide | guide |
| | | | 40 | N26793 | 1 | Dichtung kpl. | gasket assy. | joint cpl. |

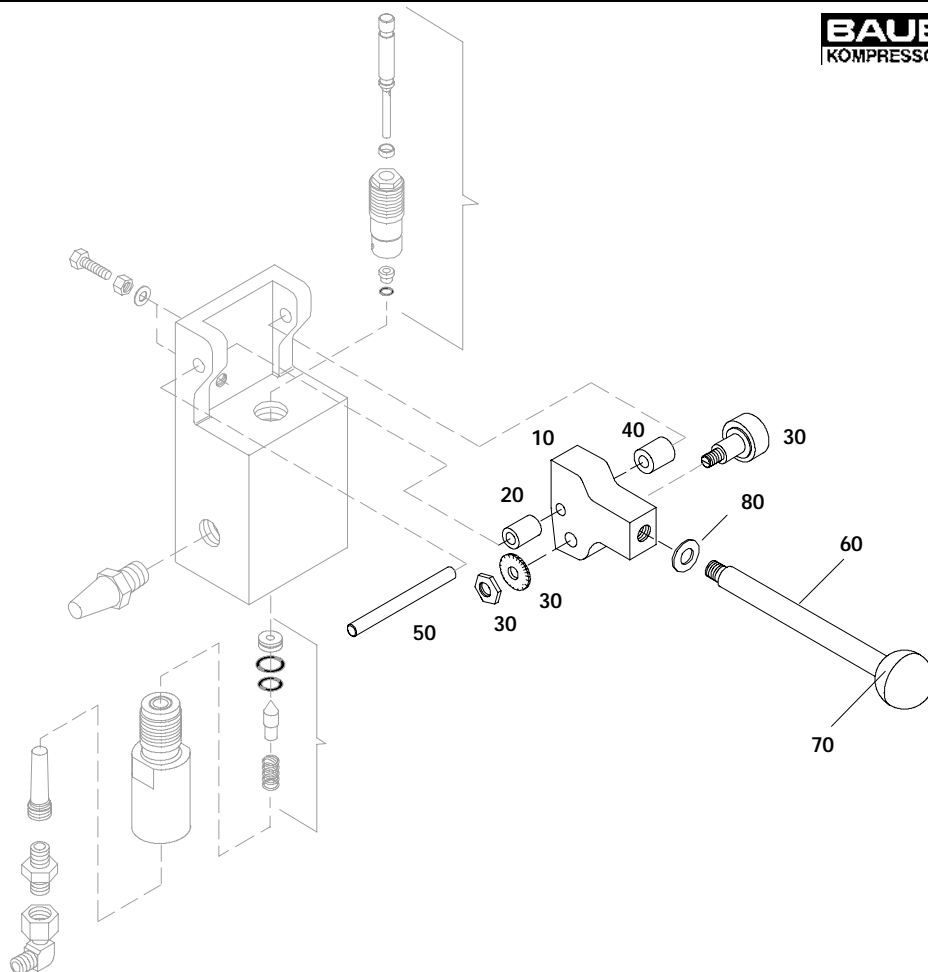
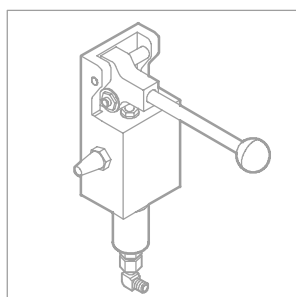
| | | | | | | | | |
|--|--|--|-----|-----------|---|----------|--------|---------------|
| | | | 401 | N26793-01 | 1 | Dichtung | gasket | joint |
| | | | 402 | N26793-02 | 1 | O-Ring | o-ring | joint torique |


 Wartungssätze
 Maintenance kits
 Kits d'entretien

 Baugruppe 81202 Kolben kpl.
 Assembly 81202 Piston assy.
 Assemblage 81202 Piston cpl.

G63.0- 4b

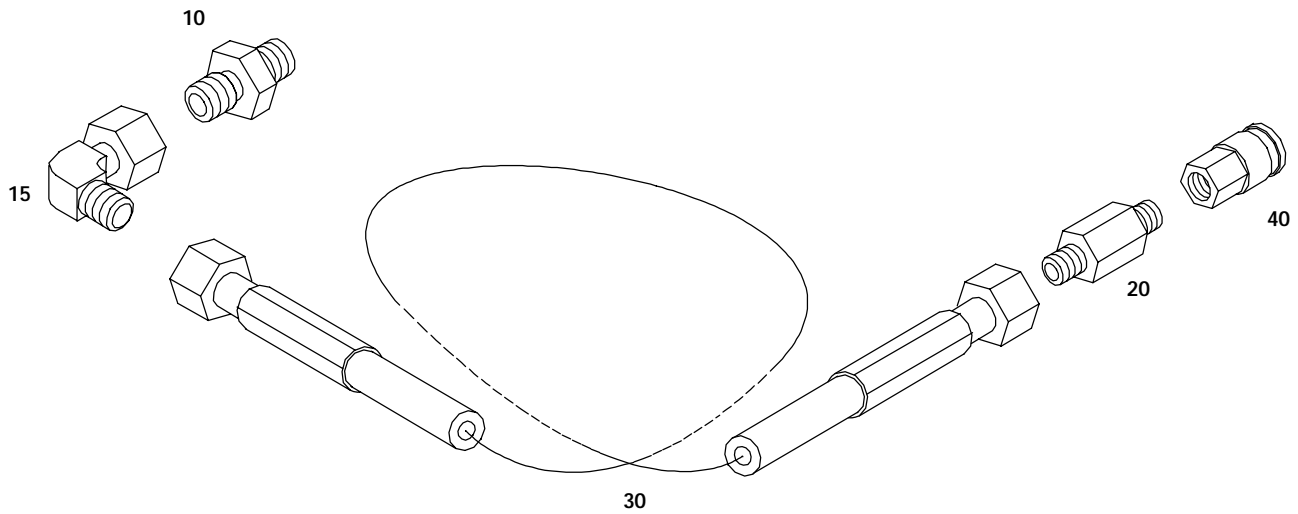
| Klasse/ Class/ Classe | | | Pos | Bestell-Nr. Part No. No. de cde. | Anz Qty. Qté. | Benennung | Designation | Dénomination |
|-----------------------------|---|---|-----|--|---------------------|------------|-------------|-------------------|
| a | b | c | | | | | | |
| | | | 10 | 81415 | 1 | Ventilsitz | valve seat | siège |
| | | | 20 | N26814 | 1 | O-Ring | o-ring | joint torique |
| | | | 30 | N26994 | 1 | O-Ring | o-ring | joint torique |
| | | | 40 | 81103-04 | 1 | Dichtkegel | nipple | cône d'étanchéité |
| | | | 50 | 7071 | 1 | Druckfeder | spring | ressort |


 Wartungssätze
 Maintenance kits
 Kits d'entretien

 Baugruppe 81208-01 Hebel kpl.
 Assembly 81208-01 Lever assy.
 Assemblage 81208-01 Levier cpl.

G63.0- 4c

| Klasse/ Class/ Classe | | | Pos | Bestell-Nr. Part No. No. de cde. | Anz Qty. Qté. | Benennung | Designation | Dénomination |
|-----------------------------|---|---|-----|--|---------------------|------------|---------------|------------------|
| a | b | c | | | | | | |
| | | | 10 | 81207-01 | 1 | Hebel | lever | levier |
| | | | 20 | N26746 | 1 | Gleitlager | slide bearing | palier-glisser |
| | | | 30 | N26745 | 1 | Laufrolle | wheel | roulette |
| | | | 40 | 81209 | 1 | Buchse | sleeve | douille |
| | | | 50 | N26744 | 1 | Paßstift | stud | axe |
| | | | 60 | 82105 | 1 | Griff | handle | poignée |
| | | | 70 | N27141 | 1 | Griff | handle | boule |
| | | | 80 | N100 | 1 | Federring | spring washer | rondelle ressort |


 Wartungssätze
 Maintenance kits
 Kits d'entretien

 Baugruppe 82228 Füllschlauch kpl. PN350
 Assembly 82228 Filling hose assy. PN350
 Assemblage 82228 Flexible de gonflage cpl. PN350

G63.0- 5

| Klasse/ Class/ Classe | | | Pos | Bestell-Nr. Part No. No. de cde. | Anz Qty. Qté. | Benennung | Designation | Dénomination |
|-----------------------------|---|---|-----|--|---------------------|--------------------------|----------------|----------------------|
| a | b | c | | | | | | |
| | | | 10 | 82740 | 1 | Gerade-Einschraubstutzen | coupling | raccord |
| | | | 15 | N20186 | 1 | Winkel-Einschraubstutzen | elbow coupling | coude |
| | | | 20 | 82229 | 1 | Adapter | adapter | adaptateur |
| | | | 30 | N27215 | 1 | Füllschlauch | filling hose | flexible de gonflage |
| | | | 40 | N26954 | 1 | Schnellkupplung | fast coupling | raccord rapide |

